



FISCHER TECHNICAL COMPANY



SCAN THE
QR CODE TO
VISIT OUR
WEBSITE

2018-2019
PRODUCT
CATALOG

MEET OUR STAFF

Helmut Fischer: (1941-2017) Founder



Helmut founded Fischer Technical Company in 1989. Helmut came to the United States from Germany and joined the US Army. After a lengthy and successful career in the High Vacuum Pump market, Helmut started Fischer Technical Company in 1989 as a manufacturer's representative agency. He began importing products from Germany as well as sourcing high vacuum pumps geared towards the science education and laboratory market. His work will always live on.

Mary Fischer: Owner/CEO

Mary founded Fischer Technical Company with her husband, Helmut in 1989 and is the Owner/CEO

John Gura: Vice President of Sales and Marketing

John joined Fischer Technical Company in 2001. Contact John for digital images, pricing, or technical questions about any of our products/lines. Contact John if you are interested in Fischer Technical Company representing your line of products at JGura@fischertech.com.

Jeff Fischer: Chief Operating Officer

Jeff handles all shipping, receiving, and billing for Fischer Technical Company. You can also email orders directly to Jeff at JFischer@fischertech.com.

Karen Gura: Customer Service

Karen helps Jeff run the office and gives us an industry opinion on products as she is a certified Illinois Teacher. Contact her at KGura@fischertech.com.

Michael Gura: Warehouse/Data Entry/Product Testing

Michael is a High School Student learning the business through part time/summer employment

Ryan Gura: Warehouse/Product Testing/Office Beautification:

Ryan is a Middle School Student and is also learning the family business.

TO ORDER CALL: 1 630 980 9780



FISCHER TECHNICAL COMPANY

TABLE OF CONTENTS

PRODUCT/TOPIC	PAGE NUMBER
OUR STAFF	2
HIGH VACUUM PUMPS	4-6
VACUUM FILTER	7
HIGH VACUUM PUMP OIL	7
PUMP OIL CHANGE SYSTEM	7
HIGH VACUUM GREASE	7
VACUUM PUMP PLATES	8
VACUUM EXHAUST FILTER	9
VACUUM GAUGES	9
HIGH VACUUM TUBING	10
VACUUM PUMP KITS	11
3 WAY VALVE	11
VACUUM TUBING CLAMP	11
DIAPHRAGM VACUUM PUMP	12-13
PIPETTE FILLERS	14-15
PIPETTORS	16
PIPETTTE TIPS	17
LABORATORY SAFETY MATS	18
GLASSWARE CLEANER	18
SPATULAS	18
VACUUM ASPIRATOR BULB	19
BELL JARS	19
DRYING/DRAINING RACK	19
SCIENCE EDUCATION POSTER SETS	20-21
BODY SCIENTIFIC "POST-IT" CHARTS	22-25
LINE CARD	26
CONTACT US	27
HOW TO ORDER	27



TO ORDER CALL: 1 630 980 9780

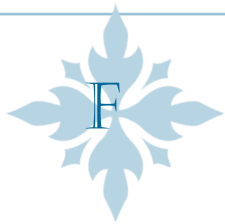
HIGH VACUUM PUMPS



OUR RELIABLE, ROTARY VANE TYPE, LOW COST TWO-STAGE HIGH VACUUM PUMP OPERATES QUIETLY. PUMPS ARE AVAILABLE RANGING FROM THE POPULAR 3 CUBIC FOOT PER MINUTE (85 LITERS PER MINUTE) UP TO 10 CUBIC FOOT PER MINUTE (283 LITERS PER MINUTE) ALL PUMPS ARE ALSO AVAILABLE IN 220V, CALL US FOR DETAILS.

Specifications:

Ultimate Vacuum:	25 microns/laboratory conditions
Pump Speed:	1725 RPM
Motor:	1/2 HP 110V, 60Hz
Oil Capacity:	27oz. (785cc)
Operating Temperature:	30° F to 170°F
Intake Port:	3/8" OD for 3/8" ID Tubing ON LAV3, LAV5, 1/2" O.D. ON LAV5, LAV7
Dimensions:	11" H x 14" L x 5 1/4" W (27.5cm x 35CM x 12.5cm)



HIGH VACUUM PUMPS

3CFM HIGH VACUUM PUMP

3 CUBIC FOOT PER MINUTE (85 LITERS PER MINUTE) HIGH VACUUM ROTARY VANE PUMP.

ITEM: LAV-3

SHIPPING WEIGHT: 30LB

3CFM HIGH VACUUM PUMP-220V

3 CUBIC FOOT PER MINUTE (85 LITERS PER MINUTE) HIGH VACUUM ROTARY VANE PUMP

ITEM: LAV-3-220

SHIPPING WEIGHT: 30LB



3CFM HIGH VACUUM PUMP WITH GAUGE

3 CUBIC FOOT PER MINUTE (85 LITERS PER MINUTE) HIGH VACUUM ROTARY VANE PUMP. FEATURES A MOUNTED BOURDON TYPE GAUGE WHICH MEASURES UP TO 30" OF MERCURY

ITEM : LAV-3/G

SHIPPING WEIGHT: 31LB

3CFM HIGH VACUUM PUMP WITH GAUGE-220V

3 CUBIC FOOT PER MINUTE (85 LITERS PER MINUTE) HIGH VACUUM ROTARY VANE PUMP. FEATURES A MOUNTED BOURDON TYPE GAUGE WHICH MEASURES UP TO 30" OF MERCURY

SCAN THE QR CODE TO SEE A VIDEO OF THIS PRODUCT

ITEM: LAV-3/G-220

SHIPPING WEIGHT: 31LB





5, 7, AND 10 CFM PUMPS

FISCHER TECHNICAL HIGH VACUUM PUMPS ARE ALSO AVAILABLE IN 5CFM, 7CFM, AND 10 CFM. THEY ARE OFFERED IN BOTH 110V AND 220V AND CAN BE PURCHASED WITH OR WITHOUT A GAUGE.

ADD "/G" TO HAVE A GAUGE ON YOUR PUMP

ADD "/220" TO ORDER THE 220V VERSION

SEE PRICE LIST FOR FURTHER DETAILS

ITEM: LAV-5
LAV-7
LAV-10

FISCHER TECHNICAL ALSO DOES PUMP REPAIR AND SELLS REPLACEMENT PARTS

EMAIL JEFF AT
JFISCHER@FISCHERTECH.COM FOR
FURTHER DETAILS.

CONTACT US FOR ANY QUESTIONS
YOU HAVE WITH REGARDS TO
PROPER MAINTENANCE ON YOUR
FISCHER TECHNICAL HIGH
VACUUM PUMP

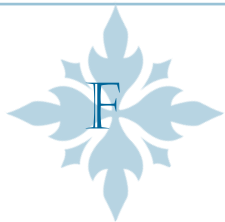
Repair Parts for DV-42 and DV-42N Series pumps manufactured prior to January 2001 see page 48.

When ordering please provide the following information:
-Model number
-Four digit serial number
-Part number and description

Plain Type - All pumps
Bold Type - Pumps manufactured beginning January 2001
Bold Italic Type - See Note in ()
Italic Type - Pumps manufactured before January 2001

REF. NO.	PART NO.	DESCRIPTION	REF. NO.	PART NO.	DESCRIPTION
1	PR-1	Sight Glass	16	PR-60	Motor Mount with Feet
2	PR-2	Drain Valve	17	PR-59	Motor Mount Feet
3	PR-300	DV-42N through DV-200N Cover Assy. w/Sight Glass and Drain Valve	18	PR-42	Motor Foot & Screw
4	PR-381	DV-285N Cover Assy. w/Sight Glass and Drain Valve	19	PR-31	Line Cord (Emerson Motor)
5	PR-202	DV-85N Cartridge w/O-Rings and Cover Seal	20	PR-35	Rocker Switch (Marathon)
6	PR-203	DV-142N Cartridge w/O-Rings and Cover Seal	21	PR-54	Rocker Switch (Emerson)
7	PR-204	DV-200N Cartridge w/O-Rings and Cover Seal	22	PR-206	1/2 HP, 115V, 60 HZ Motor w/Line Cord and Switch
8	PR-214	DV-285N Cartridge w/O-Rings and Cover Seal	23	PR-207	1/2 HP, 115/230V, 50/60 HZ Motor w/Line Cord and Switch
9	PR-403	DV-42N Cartridge w/O-Rings and Cover Seal	24	PR-39	3 CFM Splash Guard and Screw
10	PR-382	DV-85N Cartridge w/O-Rings and Cover Seal	25	PR-40	Splash Guard and Screw (Excludes 3 CFM manufactured before Jan. 2001)
11	PR-383	DV-142N Cartridge w/O-Rings and Cover Seal	26	PR-205	Cushioned Handle
12	PR-384	DV-200N Cartridge w/O-Rings and Cover Seal	27	PR-22	Oil Fill Plug w/O-Ring
13	PR-314	DV-285N Cartridge w/O-Rings and Cover Seal	28	PR-200	DV-85N Cover Assy. w/Sight Glass, Drain Valve and Guard
14	PR-216	Cover Seal	29	PR-207	DV-142N and DV-200N Cover Assy. w/Sight Glass, Drain Valve and Guard
15	PR-311	Cover Seal	30	PR-55	Drain Valve Guard and Spacer
16	PR-211	Trap O-Ring, Gas Ballast	31	PR-62	Pump Base (Includes Feet)
17	PR-3	Shaft Seal	32	PR-18	Cartridge Valve Repair Kit (Excluding 285N)
18	PR-215	Trap O-Ring, Intake	33	PR-52	DV-285N Cartridge Valve Repair Kit
19	PR-315	Trap O-Ring, Intake	34	PR-45	Pump Repair Kit: PR-1, PR-2, PR-4(2), PR-42, PR-208
20	PR-4	Rubber Foot & Screw Assy. (1 per plug.)	35	PR-208	Flexible Coupler
21	PR-24	Intake Cross with Caps			
22	NF5-4	1/4" O-Ring Cap			
23	NF5-6	3/8" O-Ring Cap			
24	PR-52	1/4" Intake with Cap			
25	PR-209	Plastic Isolation Valve Handle & Screw (Not interchangeable with Metal Handle below)			
26	PR-210	Metal Isolation Valve Handle & Screw			
27	PR-208	Flexible Coupler			

• Not Shown



PUMP ACCESSORIES

INLINE FILTER

CONTAINS 24 SQUARE INCHES OF FILTER MEDIA WHICH REMAINS STRONG UP TO 10CFM OF AIR FLOW. REMOVES PARTICLES AS SMALL AS 5 MICRONS



ITEM: LAV-INLINEFILTER
SHIPPING WEIGHT: 1 LBS



HIGH VACUUM PUMP OIL

OUR HIGH VACUUM PUMP OIL IS RECOMMENDED FOR ALL FISCHER TECHNICAL COMPANY VACUUM PUMPS. OUR PUMPS HAVE A CAPACITY OF CLOSE TO 1 QUART. SDS AVAILABLE UPON REQUEST.

ITEM: OIL-PK (2 QUARTS)
ITEM: OIL-12 (CASE OF 12 QUARTS)

SHIPPING WEIGHT: 4 LBS (PACK), 24 LBS (CASE)



"THE TANK" OIL CHANGE SYSTEM

CHANGE YOUR VACUUM PUMP OIL WITH EASE! SIMPLY OPEN THE CAP ON THE SIDE OF THE TANK, PLACE OUR VACUUM PUMP IN THE CRADLE AND OPEN THE DRAIN VALVE ON THE PUMP TO DRAIN. THE TANK HOLDS UP TO 5 OIL CHANGES.



ITEM: LAV-TANK
SHIPPING WEIGHT: 4.2LBS
NOTE: PUMP NOT INCLUDED



VACUUM GREASE

THIS VACUUM GREASE HELPS PROVIDE A PROPER SEAL BETWEEN THE VACUUM PUMP PLATE AND THE BELL JAR SO THAT HIGH VACUUM CAN BE ACHIEVED. SDS AVAILABLE UPON REQUEST.

4 OUNCES OF GREASE IN A SCREW TOP JAR



ITEM: LAV-GREASE
SHIPPING WEIGHT: 1 LBS





CAST IRON VACUUM PUMP PLATE

THIS CAST IRON PLATE ACCOMMODATES BELL JARS UP TO 9" DIAMETER, FEATURES A 3/8" HOSE CONNECTION, A VACUUM RELEASE VALVE, A BLEEDER VALVE, AND A RUBBER GASKET FOR A TIGHT SEAL.

REPLACEMENT GASKETS AVAILABLE

ITEM: GA-001

SHIPPING WEIGHT: 18 LBS

**REPLACEMENT GASKET:
GA-RUBGAS**



ACRYLIC VACUUM PUMP PLATE

THIS ACRYLIC PLATE ACCOMMODATES BELL JARS UP TO 9" DIAMETER, FEATURES A 3/8" HOSE CONNECTION, A VACUUM RELEASE VALVE, AND A RUBBER GASKET FOR A TIGHT SEAL.

REPLACEMENT GASKETS AVAILABLE

**SCAN THE QR CODE TO SEE A
VIDEO OF THIS PRODUCT**

ITEM: AP-001

SHIPPING WEIGHT: 5 LBS

**REPLACEMENT GASKET:
AP-RUBGAS**



PUMP ACCESSORIES

VACUUM PUMP EXHAUST FILTER

ELIMINATES SMOKE FROM THE LAV SERIES PUMPS EXHAUST BY REMOVING OIL MISTS.

ITEM: LAV-EF

SHIPPING WEIGHT: 0.4 LBS



DIGITAL VACUUM GAUGE

READS VACUUM IN 7 INTERNATIONAL UNITS: MICRONS, PSIA, INCHES OF MERCURY, mBars, PASCALS, TORR, mTorr. REQUIRES 3AA BATTERIES (INCLUDED) VACUUM RANGE OF 25-12000 MICRONS.

ITEM: HVG-001

SHIPPING WEIGHT: 2 LBS



"IN LINE" VACUUM GAUGE

IN-LINE VACUUM BOURDON TUBE GAUGE (0-30" Hg). FOR USE WITH VACUUM TUBING WITH 1/2" ID.

ITEM: HVG-002

SHIPPING WEIGHT: 1 LB



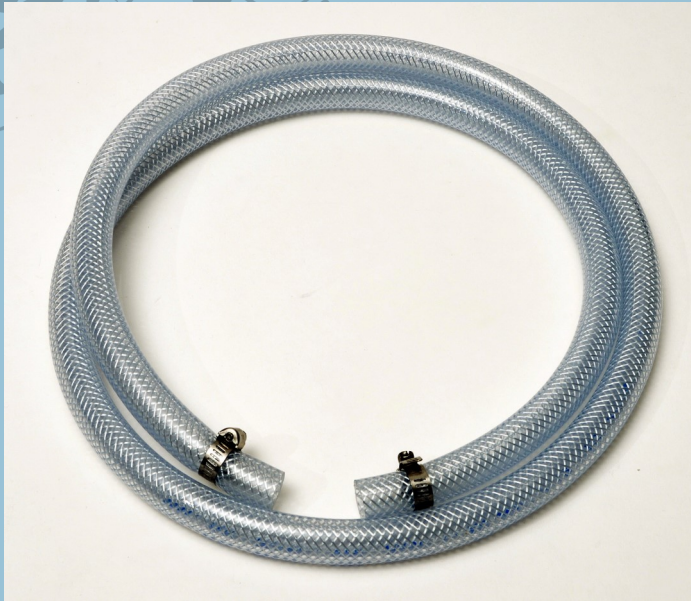
2" VACUUM GAUGE

FOR USE WITH PUMPS/SYSTEMS REQUIRING A 1/4" CONNECTION. GAUGE IS 2" IN DIAMETER AND MEASURES IN INCHES OF MERCURY

ITEM: HVG-004

SHIPPING WEIGHT: 0.1 LBS





**HIGH VACUUM TUBING/
CLAMP SET**

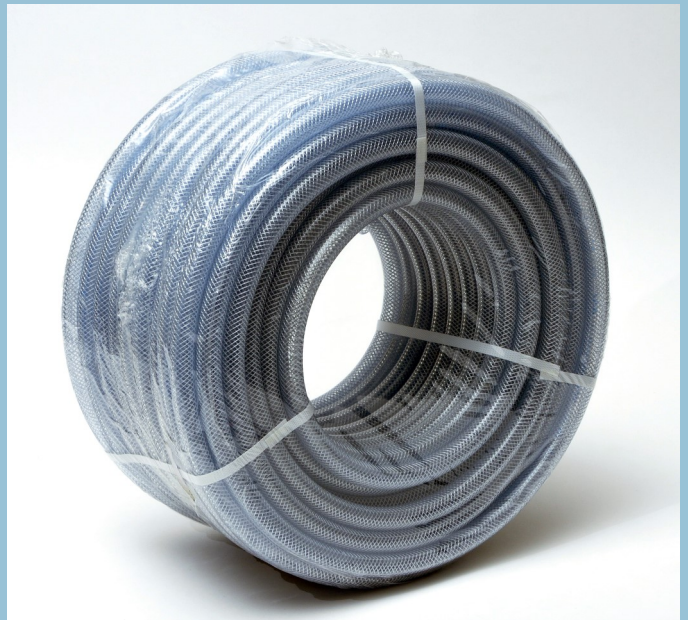
5' PIECE OF HIGH VACUUM TUBING WITH AN ID OF 1/2" AND TWO TUBING CLAMPS. EXCELLENT FOR USE WITH HIGH VACUUM PUMPS AND BELL JARS.

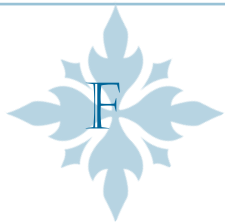
**ITEM: HVG-TUBING/SET
SHIPPING WEIGHT: 1 LB**

**HIGH VACUUM PUMP
TUBING**

1/2" ID REINFORCED HIGH VACUUM TUBING. SUITABLE FOR ALL HIGH VACUUM APPLICATIONS. AVAILABLE BY THE FOOT OR AS A 164' FOOT ROLL.

**ITEM: HVG-TUBING (PER FOOT)
ITEM: HVG-TUBING/ROLL (164')
SHIPPING WEIGHT: 33 LBS (ROLL)**





PUMP ACCESSORIES AND CLASSROOM KIT

VACUUM PUMP DELUXE KIT

IDEAL FOR PHYSICS CLASSROOMS. INCLUDES A 3CFM VACUUM PUMP WITH GAUGE, VACUUM TUBING WITH CLAMP, 6" X 11" GLASS BELL JAR, BALLOONS, PETRI DISH, AND AN ACRYLIC VACUUM PUMP PLATE

SCAN THE QR CODE TO SEE A VIDEO OF THIS PRODUCT



ITEM: LAV-3G-DKIT-
SHIPPING WEIGHT: 56LBS,TWO
BOXES TOTAL



3-WAY VALVE

OUR 3-WAY BRASS BALL VALVE WITH $\frac{1}{4}$ "-FULL PORT AND 3 EACH $\frac{3}{8}$ " HOSEBARB CONNECTIONS WILL HOLD A VACUUM IN YOUR SYSTEM, ISOLATE THE VACUUM PUMP TO PREVENT OIL BACKUP, AND RELEASE/BLEED AIR BACK INTO YOUR SYSTEM ALL IN ONE. AN EXTERNAL VACUUM GAUGE CAN BE CONNECTED TO THE THIRD VALVE TO TAKE A SYSTEM VACUUM READING ISOLATED FROM THE VACUUM PUMP

ITEM: LAV-3WAYVALVE
SHIPPING WEIGHT: 2 LBS



TUBING CLAMP

FOR USE WITH $\frac{7}{16}$ " TO 1" OD HIGH VACUUM TUBING ENABLING A TIGHT SEAL

ITEM: HVG-CLAMP
SHIPPING WEIGHT: 0.1 LBS



TO ORDER CALL: 1 630 980 9780

PILOT3000 ECONOMICAL CHEMICAL-RESISTANT DIAPHRAGM VACUUM PUMP



**OPTIONAL
VACUUM
REGULATOR
ASSEMBLY**



THE PILOT3000 ECONOMICAL CHEMICAL-RESISTANT DIAPHRAGM VACUUM PUMP IS CONSTRUCTED FROM QUALITY PARTS, MANUFACTURED IN THE USA, AND OFFERED AT AN AFFORDABLE PRICE. THE PUMP IS LIBRARY QUIET. THE PUMP IS NEARLY MAINTENANCE-FREE BECAUSE OF THE PTFE COATED SURFACES, PTFE MEMBRANE, STAINLESS STEEL VALVES, AND OIL FREE DESIGN. THE PUMP IS A 20PSE CONTINUOUS DUTY PUMP FEATURING AN AIRFLOW OF 0.7CFM AND MAXIMUM VACUUM OF 22". PUMP IS UL RECOGNIZED AND HAS A 115V NORTH AMERICAN PLUG. SERVICE KITS, PRESSURE REGULATOR ASSEMBLY, AND REPLACEMENT VACUUM REGULATOR ASSEMBLIES ARE AVAILABLE. SHIPPING WEIGHT OF PUMP IS 12LBS.

TLD3000	PILOT 3000 PUMP	TLD3000K-01	DIAPHRAGM REPLACEMENT PARTS
TLD3500K-05	VACUUM REGULATOR ASSEMBLY	TLD3000K-03	MAJOR REBUILD PARTS
TLD3500K-05	PRESSURE REGULATOR ASSEMBLY	TLD2500K-04	RUBBER SUCTION CUP FEET



OIL FREE VACUUM PUMPS

PILOT 5000 CHEMICAL-RESISTANT DIAPHRAGM VACUUM PUMP



PUMP ONLY



PUMP WITH PRESSURE REGULATOR



THE PILOT5000 (115V) AND PILOT5000C-02 (220V) CHEMICAL RESISTANT DIAPHRAGM VACUUM PUMPS ARE DURABLE AND CHEMICAL RESISTANT. ALL CONTACT SURFACES ARE PTFE COATED. BOTH INCLUDE AN INLET TRAP AND VACUUM REGULATOR AND ARE A PERFECT CHOICE FOR VACUUM FILTRATION, DESICCATION, AND OTHER MID-RANGE VACUUM APPLICATIONS. THE PUMPS ARE RESISTANT TO BLEACH AND ACETONE VAPORS ALLOWING THEM TO BE USED WITH CELL CULTURE DECONTAMINATION PROTOCOLS. AIR FLOW IS 1.3CFM (60HZ) AND 1.1 CFM (50HZ). MASIMUM VACUUM IS 24". AVAILABLE IN BOTH 115V AND 220V. UL LISTED AND MADE IN THE USA. REPLACEMENT VACUUM REGULATOR ASSEMBLY, PRESSURE REGULATOR ASSEMBLY, AND REPAIR KITS ARE AVAILABLE

TLD5000	PILOT 5000 PUMP	TLD5000K-01	DIAPHRAGM REPLACEMENT PARTS
TLD5000C-02	PILOT 5000 PUMP (220V)		
TLD2500K-05	VACUUM REGULATOR ASSEMBLY	TLD5000K-03	MAJOR REBUILD PARTS
TLD3500K-05	PRESSURE REGULATOR ASSEMBLY	TLD2500K-04	RUBBER SUCTION CUP FEET



“FLIP” PIPETTE FILLER

THE PATENTED FLIP STYLE PIPETTE FILLER IS MADE OF NATURAL RUBBER AND CAN ACCOMMODATE PIPETTES UP TO 50ML WITH ITS 1/4 INCH DIAMETER OPENING FEATURING A TWO VALVE SYSTEM WITH A REMOVABLE TOP VALVE FOR EASY CLEANING AND ONE HANDED USE. THE FLIP MODEL IS AVAILABLE IN RED, BLACK, BLUE, GREEN, AND YELLOW.

ITEM: FLIP-01 (RED)
ITEM: FLIP-02 (BLACK)
ITEM: FLIP-03 (BLUE)
ITEM: FLIP-04 (GREEN)
ITEM: FLIP-05 (YELLOW)

SHIPPING WEIGHT: 0.2 LBS



NATURAL RUBBER PIPETTE FILLER

MADE FROM ALL NATURAL RUBBER, THE FISCHER TECHNICAL THREE VALVE PIPETTE FILLERS ARE IMPORTED FROM GERMANY AND WILL ACCOMMODATE PIPETTES UP TO 50ML AND FEATURE A 1/4 INCH DIAMETER OPENING. THIS FILLER ELIMINATES THE NEED FOR DANGEROUS MOUTH PIPETTING. THEY ARE AVAILABLE IN RED, BLACK, BLUE, AND GREEN..

ITEM: RED-001
ITEM: BLK-001
ITEM: BLU-001
ITEM: GRN-001

SHIPPING WEIGHT: 0.2 LBS



LIQUID HANDLING

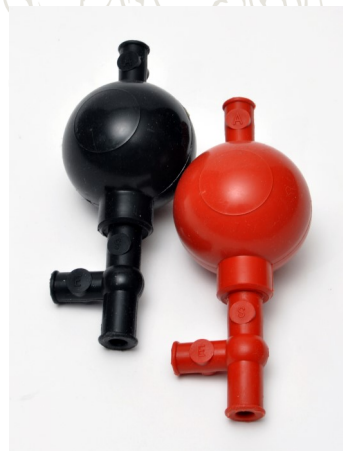
SILICONE PIPETTE FILLERS

THE THREE VALVE PIPETTE FILLER IS ALSO AVAILABLE IN CHEMICALLY RESISTANT SILICONE RUBBER. THIS BULB ALSO ACCOMMODATES PIPETTES UP TO 50ML AND HAS A 1/4 INCH DIAMETER OPENING. AVAILABLE IN RED AND BLACK

ITEM: SILRED-001 (RED)

ITEM: SILBLK-001 (BLACK)

SHIPPING WEIGHT: 0.2 LBS



MULTI-COLORED PIPETTE FILLER

TIE DYE VERSION OF OUR NATURAL RUBBER PIPETTE FILLERS. ACCOMMODATE PIPETTES UP TO 50ML AND FEATURE A 1/4" DIAMETER OPENING

ITEM: MULTIPIP

SHIPPING WEIGHT: 0.2 LBS



PIPETTE FILLER ASSORTMENTS

THREE CONVENIENT ASSORTMENT PACKS OF OUR PIPETTE FILLERS

ITEM: FLIPKIT5 (ONE EACH OF BLACK, BLUE, YELLOW, RED, AND GREEN FLIP STYLE PIPETTE FILLERS)

ITEM: PFKIT5 (ONE EACH OF GREEN, RED, BLUE, BLACK, AND MULTICOLORED NATURAL RUBBER PIPETTE FILLERS)

ITEM: PFKIT4 (ONE EACH RED001, FLIP-01, MULTIPIP, AND SILRED-001)

SHIPPING WEIGHT OF EACH KIT IS 0.5 LBS





VARIABLE VOLUME MICROPIPETTE

FISCHER TECHNICAL VARIABLE VOLUME PIPETTERS ARE AVAILABLE IN THREE SIZES: 100-1000 MICROLITERS, 500-5000 MICROLITERS, AND 1000-10000 MICROLITERS. THESE VOLAC PIPETTERS ACCEPT STANDARD PIPETTE TIPS AND FEATURES AN ANALOG VOLUME ADJUSTMENT. USES THE FOLLOWING TIPS:

E1000-01: D592

E1000-05: D893

E1000-10: D894

ITEM: E1000-01 (100-1000 μ L)

ITEM: E1000-05 (500-5000 μ L)

ITEM: E1000-10 (1000-10000 μ L)

SHIPPING WEIGHT: 1.4 LBS

MINI PIPETTES

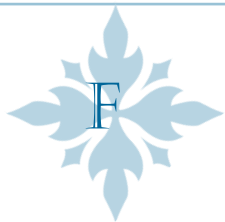
FISCHER TECHNICAL MINI PIPETTERS ARE INEXPENSIVE, HIGH QUALITY, FIXED VOLUME PIPETTERS. THEY ARE AVAILABLE IN BOTH TEN AND TWENTY MICROLITER SIZES AND ACCEPT STANDARD PIPETTE TIPS. USES FISCHER TECHNICAL ITEM D590 PIPETTE TIPS.

ITEM: 347020 (10 μ L, WHITE)

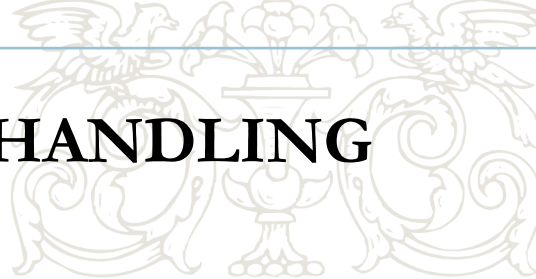
ITEM: 347021 (20 μ L, PINK)

SHIPPING WEIGHT: 0.2 LBS





LIQUID HANDLING

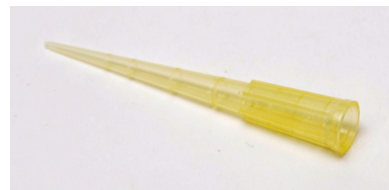


200 μ L PIPETTE TIPS

BULK PACKAGED PIPETTE TIPS. FITS MOST BRANDS OF PIPETTORs, FOR USE WITH FISCHER TECHNICAL COMPANY MINI PIPETTES (ITEMS 347020 AND 347021). SOLD IN BAGS OF 1000

ITEM: D590

SHIPPING WEIGHT: 0.4 LBS



1000 μ L PIPETTE TIPS

BULK PACKAGED PIPETTE TIPS. FITS MOST BRANDS OF PIPETTORs, FOR USE WITH FISCHER TECHNICAL COMPANY E1000-01 MICROPIPETTE. SOLD IN BAGS OF 1000

ITEM: D592

SHIPPING WEIGHT: 1.8 LBS



5ML PIPETTE TIPS

BULK PACKAGED PIPETTE TIPS. FITS MOST BRANDS OF PIPETTORs, FOR USE WITH FISCHER TECHNICAL COMPANY E1000-05 MICROPIPETTE. SOLD IN BAGS OF 500

ITEM: D893

SHIPPING WEIGHT: 2.4 LBS



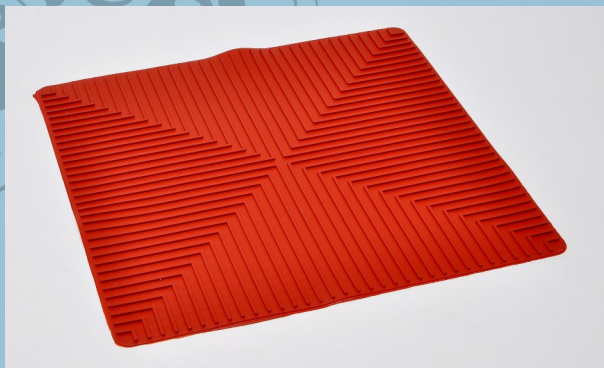
10ML PIPETTE TIPS

BULK PACKAGED PIPETTE TIPS. FOR USE WITH FISCHER TECHNICAL COMPANY E1000-10 MICROPIPETTE. SOLD IN BAGS OF 400

ITEM: D894

SHIPPING WEIGHT: 4.4 LBS





LABORATORY SAFETY MATS

SILICONE LAB SAFETY MATS FEATURE A NON SLIP SURFACE AND IS AVAILABLE IN TWO DIFFERENT SIZES (250MM X 250MM AND 350MM X 350MM) AND IN BOTH BLACK AND RED.



ITEM: LABMATRED (250MM, RED)
ITEM: LABMATBLK (250MM, BLACK)
ITEM: LABMATRED-L (350MM, RED)
ITEM: LABMATBLK-L (350MM, BLACK)

SHIPPING WEIGHT: 0.3 LBS (250MM)
SHIPPING WEIGHT: 0.7 LBS (350MM)

GLASSWARE CLEANER

THESE FLEXIBLE ROUND BOTTOM GLASS CLEANERS ARE IDEAL FOR USE WITH A STIRRING ROD (5MM OPENING TO ATTACH A STIRRING ROD) TO CLEAN THE BOTTOM OF NARROW GLASSWARE SUCH AS TEST TUBES AND CYLINDERS.

ITEM: GLSCLN (EACH)
ITEM: GLSCLN-PK/6 (PACK OF 6)
SHIPPING WEIGHT: 0.1 LBS

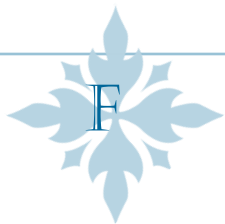


SPATULAS

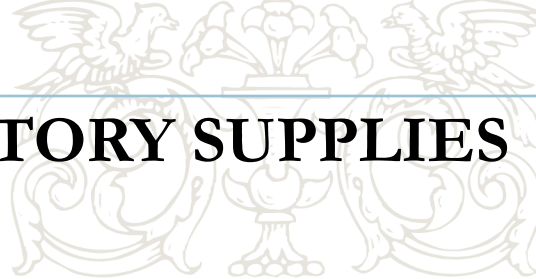
ATTACHES TO A STIRRING ROD AND IS USED AS A SOFT STYLE SPATULA WITH EXCELLENT CHEMICAL RESISTANCE. OPENING IS 5MM FOR STIRRING ROD. AVAILABLE IN NATURAL RUBBER OR SILICONE

ITEM: SILSPAT-R(EACH, RUBBER)
ITEM: SILSPAT-R-PK/6 (PK/6)
ITEM: SILSPAT-S (EACH, SILICONE)
ITEM: SILSPAT-S-PK/6 (PK/6)
SHIPPING WEIGHT: 0.1 LBS





LABORATORY SUPPLIES



VACUUM ASPIRATOR BULB

BULB IS IDEAL FOR GAS ASPIRATING DUTIES AND IS MADE FROM NATURAL RUBBER. THE RED VALVES ARE INTERCHANGEABLE AND CAN BE USED AS BOTH A PRESSURE AND VACUUM VALVE. 111MM LENGTH, 57MM DIAMETER



ITEM: VPBULB
SHIPPING WEIGHT: 0.5 LBS



BELL JARS

IDEAL FOR PHYSICS EXPERIMENTS, THESE BOROSILCATE GLASS BELL JARS FEARE A HANDLE ON TOP AND ARE AVAILABLE IN THREE SIZES.



ITEM: BJAR-01 (5" X 9")
ITEM: BJAR-02 (6" X 11")
ITEM: BJAR-03 (8.5" X 15")
SHIPPING WEIGHT: 6LBS,
14LBS, 27 LBS

DRAINING/DRYING RACK

THERE ARE 72 8CM PINS AND 18 13CM PINS TO HOLD ALL TYPES OF TEST TUBES, BEAKERS, AND FLASKS. THE VINYL COATING PREVENTS CHIPPING AND IS RESISTANT TO MOST CHEMICALS AND OILS. THE FRAME AND PINS ARE MADE OF TOUGH EXTRUDED STEEL WIRE, ELECTRICALLY SPOT WELDED FOR EXTRA STRENGTH. A HEAVY-GAUGE, RUSTPROOF METAL DRAINAGE PAN COVERS THE ENTIRE BACK. HOLDS 90 PIECES OF GLASSWARE. 47CM X 18CM X 48CM

ITEM: 901807BK
SHIPPING WEIGHT: 10 LBS



TO ORDER CALL: 1 630 980 9780



INTRODUCTION TO GEOLOGY POSTER SET

INCLUDES FOUR 24" X 36" LAMINATED POSTERS: INTRODUCTION TO ROCKS, INTRODUCTION TO MINERALS, INTRODUCTION TO FOSSILS, AND INTRODUCTION TO GEMSTONES

ITEM: GEOPOS/SET

SHIPPING WEIGHT: 2 LB



ANIMAL ORDERS POSTER SET

INCLUDES FOUR 24" X 36" LAMINATED POSTERS: FISH, BIRDS, MAMMALS, AND AMPHIBIANS & REPTILES

ITEM: ANIPOS/SET

SHIPPING WEIGHT: 2 LB



BIRD ORDERS POSTER SET

INCLUDES FOUR 24" X 36" LAMINATED POSTERS: BACKYARD BIRDS OF NORTH AMERICA, PARROTS, AVIAN RAPTORS, AND GAMEBIRDS & FOWL

ITEM: BRDPOS/SET

SHIPPING WEIGHT: 2 LB



POSTER SETS

AMPHIBIANS AND REPTILES POSTER SET

INCLUDES FOUR 24" X 36" LAMINATED POSTERS:
NORTH AMERICAN SNAKES, AMPHIBIANS &
REPTILES, FROGS & TOADS, TURTLES, TERRAPINS,
AND TORTOISES

ITEM: REPPPOS/SET

SHIPPING WEIGHT 2 LB

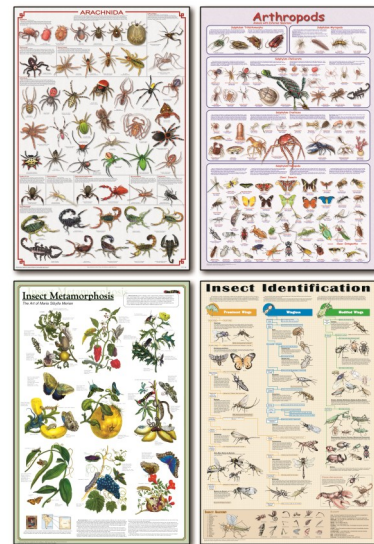


INSECTS POSTER SET

INCLUDES FOUR 24" X 36" LAMINATED POSTERS:
INSECT METAMORPHOSIS, INSECT
IDENTIFICATION, ARTHROPODS, AND ARACHNIDA

ITEM: INSPOS/SET

SHIPPING WEIGHT 2 LB



MAMMALS POSTER SET

INCLUDES FOUR 24" X 36" LAMINATED POSTERS:
PRIMATES, UNGULATES, CARNIVORA, AND
MARSUPIALS

ITEM: MAMPOS/SET

SHIPPING WEIGHT 2 LB.



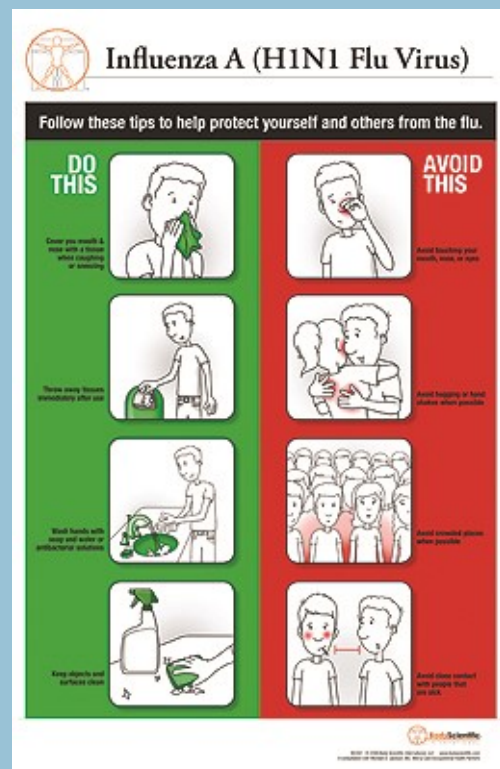
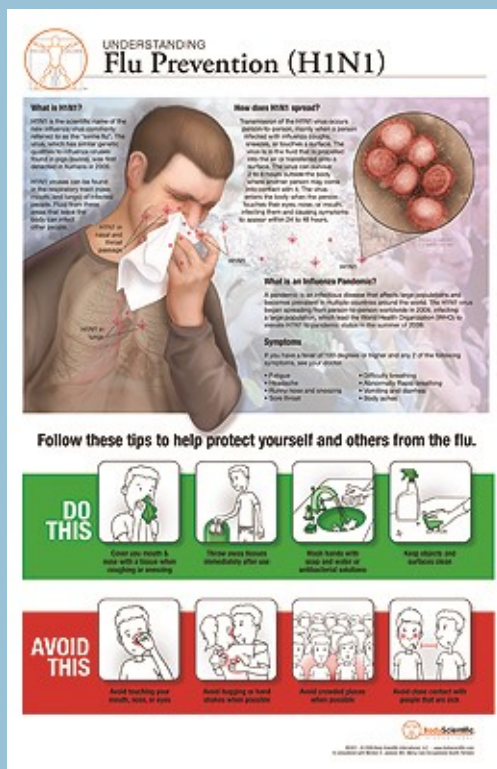
POST-IT CHARTS BY BODY SCIENTIFIC

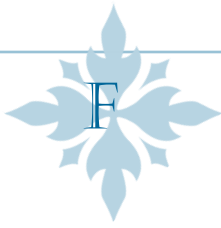
ABOUT BODY SCIENTIFIC: BODY SCIENTIFIC HAS OVER 20 YEARS OF EXPERIENCE CREATING AND MANUFACTURING MEDICAL EDUCATION PRODUCTS. FROM ANATOMICAL CHARTS AND MODELS, TO BOOKS AND NOW MOBILE APPLICATIONS FOR YOUR IPAD. BODY SCIENTIFIC HAS THE EDUCATIONAL PRODUCTS YOU WANT AND ALLOWS YOU TO EXPERIENCE NEW QUALITY ILLUSTRATIONS AND PRODUCTS.

MARCELO OLIVER AND HIS TEAM HAVE CONSISTANTLY DEVELOPED AND PRODUCED THE HIGHEST QUALITY MEDICAL DRAWINGS AND ARE TRANSLATING THOSE ILLUSTRATIONS TO THE CLASSROOM OR THE DR'S OFFICE.

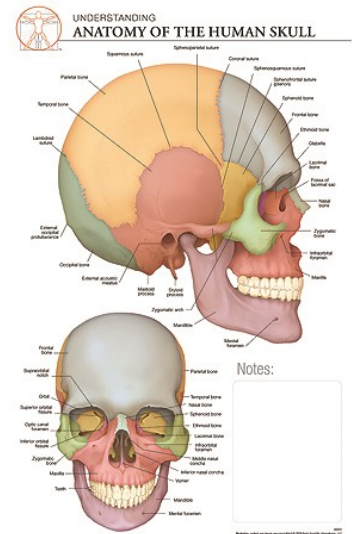
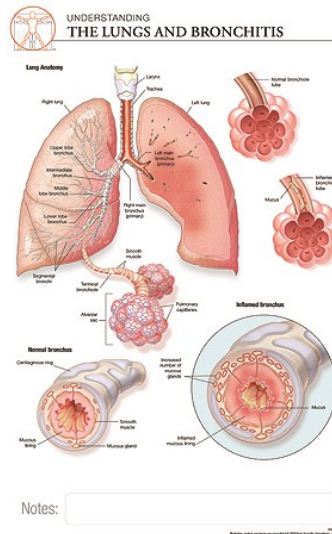
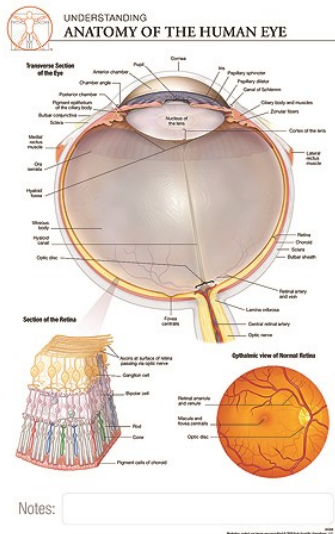
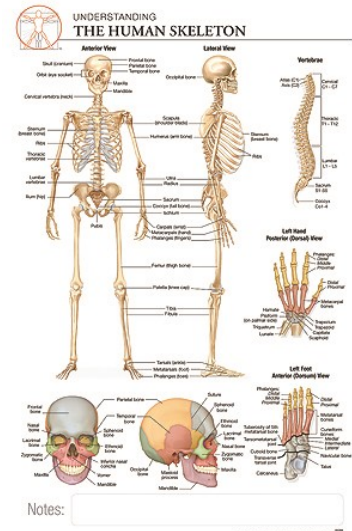
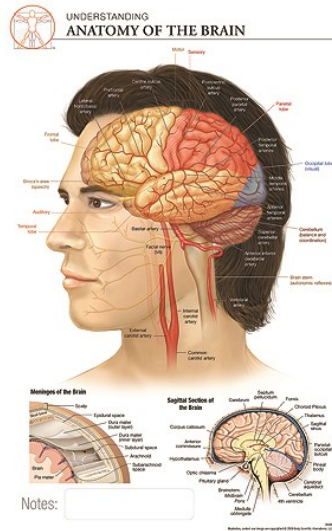
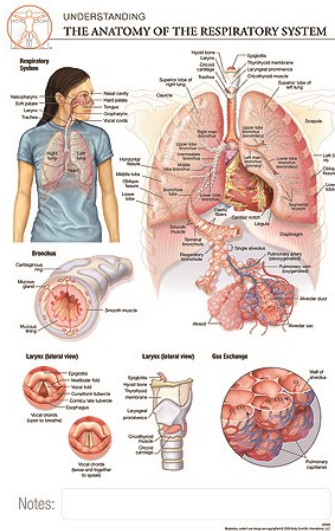
POST IT ANATOMY CHARTS ARE THE PERFECT UNION OF 3M TECHNOLOGY WITH BODY SCIENTIFIC ILLUSTRATIONS AND DESIGNS. POST IT ANATOMY CHARTS ARE PRINTED ON HEAVY, QUALITY STOCK PAPER, BACKED WITH 3M ADHESIVE POST-IT MATERIAL AND WILL STICK TO VIRTUALLY ANY SURFACE. REPOSITION THE POST-IT ANATOMY CHART MANY TIMES WITHOUT DAMAGING THE SURFACE.

ALL CHARTS ARE 11" X 17" AND ARE SOLD IN PACKS OF TEN.
SHIPPING WEIGHT PER PACK OF TEN: 1 LB





POST-IT CHARTS



DIGITAL IMAGES AVAILABLE

FOR DIGITAL IMAGES OF THE BODY SCIENTIFIC CHARTS OR ANY OF OUR OTHER PRODUCTS, EMAIL [JGURA@FISCHERTECH.COM](mailto:jgura@fischertechn.com) AND WE WILL PROVIDE YOU WITH A LINK.

WE ALSO HAVE A MASTER SPREADSHEET AVAILABLE WITH ALL OF OUR PRODUCTS FEATURING ALL THE INFORMATION NEEDED TO UPLOAD OUR PRODUCTS INTO YOUR SYSTEM INCLUDING SHIPPING DIMENSIONS, CATALOG COPY, HTS CODES, ETC.



POST-IT CHARTS

CHART TITLES

BS301	FLU PREVENTION
BS302	INFLUENZA A
BS303	RESPIRATORY SYSTEM
BS304	DIGESTIVE SYSTEM
BS305	ANATOMY OF THE BRAIN
BS306	HUMAN SKELETON
BS307	URINARY SYSTEM
BS308	UTERUS AND OVARIES
BS309	ANATOMY OF THE EYE
BS310	HOW EYESIGHT WORKS
BS311	ANATOMY OF THE SKULL
BS312	OSTEOARTHRITIS
BS313	RHEUMATOID ARTHRITIS
BS314	EMPHYSEMA
BS315	BRONCHITIS
BS316	ASTHMA
BS317	GERD
BS318	ATHEROSCLEROSIS
BS319	COMPLICATIONS OF ATHERO
BS320	MALE REPRODUCTIVE SYSTEM
BS321	FEMALE REPRODUCTIVE SYSTEM
BS322	HYPERTENSION
BS323	STROKE
BS324	OTISISMEDIA
BS325	ACUTE CORONARY DISEASE
BS326	CRANIAL NERVES
BS327	BREAST CANCER
BS328	COMPLICATIONS OF DIABETES
BS329	TYPE 2 DIABETES
BS330	OVERACTIVE BLADDER (MALE)
BS331	OVERACTIVE BLADDER (FEMALE)
BS332	BPH
BS333	OSTERPOROSIS
BS334	HUMAN VERTEBRAE
BS335	ANATOMY ALPHABET
BS336	REFLEXOLOGY OF THE FOOT
BS337	THE HEART
BS338	MUSCULAR SYSTEM
BS339	MAJOR VESSELS
BS340	JOINTS
BS341	MUSCLE TYPES
BS342	ANATOMY OF THE EAR
BS343	NERVOUS SYSTEM
BS344	BLOOD CELLS
BS345	TISSUE TYPES
BS346	THE INTEGUMENTARY SYSTEM

We proudly represent these manufacturers:

ACCURATE WIRECRAFT- WIRE TEST TUBE RACKS, Drain Racks, Funnel Supports, Baskets, Slant Racks, Centrifuge Bottle Racks, Radiation and Biohazard Racks. Available in Epoxy, Vinyl, or Zinc coating. Quotes on special racks are encouraged.

BODY SCIENTIFIC INTERNATIONAL – Anatomy and Disease educational posters backed with 3M “Post It” material.

CULTURE MEDIA AND SUPPLIES- PREPARED MEDIA – Standard and custom formulations are available in plates, slants, bottles, and tubes. Buffer Solutions and Sensitivity Discs are also offered. Dehydrated culture media is supplied in bulk or repacked in convenient small lots.

FEENIX PUBLISHING, INC.- Publishers of Life on Earth Posters. All posters are 2’ x 3’ and are laminated

KERKAU MANUFACTURING- STERILIZING CABINETS for safety goggles

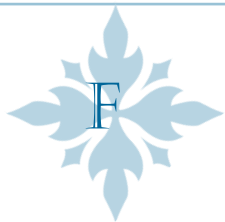
LH TECHNOLOGIES (A DIVISION OF UNITED SCIENTIFIC SUPPLIES)- Innovative liquid handling products featuring the Sapphire Dual Inlet Bottle Top Dispenser

QUINCY LAB CORP.- OVENS, INCUBATORS, Analog and Digital lab and bench models, strip heaters, Microscope Slide Cabinets

UNITED SCIENTIFIC SUPPLIES - Extensive line of Laboratory Hardware, Plastic Labware, Borosilicate Glassware, Liquid Handling, Science Education supply Items, STEM-based Inquiry kits, Anatomical Models, prepared slides, etc. Custom kitting available.

CONTACT JGURA@FISCHERTECH.COM IF YOU ARE INTERESTED IN FISCHER TECHNICAL COMPANY REPRESENTING YOUR PRODUCTS IN THE LABORATORY SUPPLY OR SCIENCE EDUCATION MARKET.





WHERE TO FIND US

FISCHER TECHNICAL COMPANY

840 WEST LAKE STREET
SUITE 404
ROSELLE, IL 60172
630-980-9780 PHONE
630-980-9881 FAX
WWW.FISCHERTECH.COM

VISIT US ON SOCIAL MEDIA

www.twitter.com/johngura
www.facebook.com/FischerTechnicalCompany
www.linkedin.com/company/fischer-technical-company



**SCAN THE QR CODE TO VISIT OUR
YOUTUBE PAGE AND SEE VIDEOS OF
SOME OF OUR PRODUCTS!**

**ALL PRODUCTS COME WITH A 12 MONTH
MANUFACTURER'S WARRANTY. PLEASE CONTACT JEFF
FISCHER AT JFISCHER@FISCHERTECH.COM TO RECEIVE A
RETURN GOODS AUTHORIZATION NUMBER FOR ALL
RETURNS.**

**EMAIL ORDERS TO JFISCHER@FISCHERTECH.COM
FAX ORDERS TO 630-980-9881.**

**CONTACT JOHN GURA AT JGURA@FISCHERTECH.COM FOR
INFORMATION ON THE MANUFACTURER'S WE REPRESENT.**

**\$50 MINIMUM ORDER. WE WILL SHIP SMALLER ORDERS
FOR A \$5 HANDLING FEE. NO CHARGE FOR DROP
SHIPMENTS OVER \$50.**

**OUR INAGURAL CATALOG IS DEDICATED TO THE MEMORY
OF HELMUT FISCHER AND ROBERT FISCHER.**

FISCHER TECHNICAL COMPANY

840 W Lake St.

Suite 404

Roselle, IL 60172

630-980-9780 phone

630-980-9881 fax

www.fischertech.com

info@fischertech.com

Established 1989